

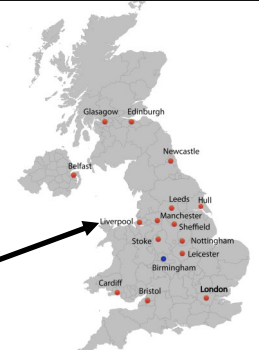


Vancouver

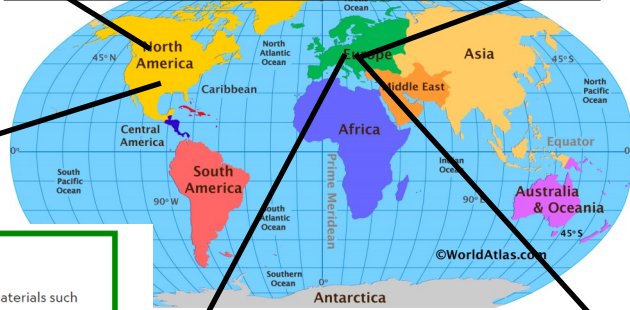


Transport Links

Birmingham



7 Continents and 5 Oceans



THE SITE OF BIRMINGHAM

Birmingham was established on a dry point site, on a raised plateau overlooking the Rea River's fording (crossing) point. This location provided the first settlers with a water source, and the intersecting paths offered access to local resources such as timber, iron, and coal. During the 18th century, Birmingham functioned as a market town, overshadowed by nearby county towns, including Stafford, Worcester, and Warwick. The primary route to London from the northwest crossed the Midlands via Lichfield and Coventry, bypassing Birmingham.

Birmingham fostered its unique industries, specifically jewellery, firearms production, and brass trades. Before constructing canals to transport bulky goods, these industries required skilled labour but minimal raw materials to manufacture high-quality products.

Starting from the 1830s, Birmingham experienced rapid expansion as industries and workers migrated to the city. Its central position on the Birmingham plateau became critical to transforming into a significant city.

New York

NATURAL RESOURCES
New York is known for supplying construction materials such as limestone, salt, sand, and gravel. It's also one of the top states for garnets, though they're used for industrial purposes instead of jewelry. And New York is the only state that mines wollastonite, used for manufacturing ceramics and paints.

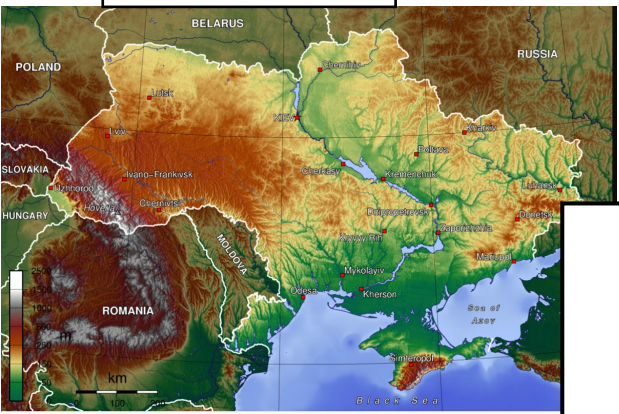
Human Features



Paris



Ukraine



Physical Features