



The Polar Regions!

KNOWLEDGE ORGANISER

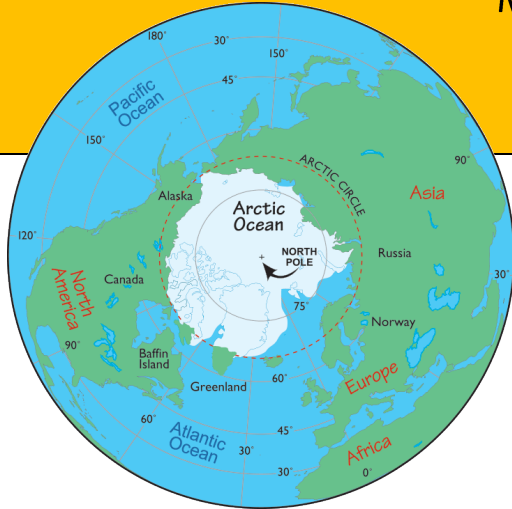


Overview

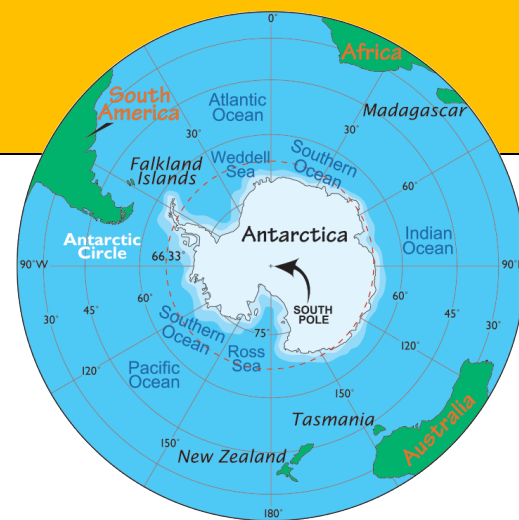


- The North Pole is the most northern point in the world. The area around the North Pole is known as the Arctic.
- The South Pole is the most southern point in the world. The area around the South Pole is known as the Antarctic.
- The Polar Regions (the North and South Poles) are the coldest places on Earth.
- The North and South Poles are the axis points on Earth (the Earth spins from these two points).

Maps



- The Arctic is mostly an ocean that is covered in a thick layer of ice.
- The frozen ice of the North Pole is over an ocean, not solid land.



- The Antarctic lays on its own continent (Antarctica).
- The South Pole is over an ocean, not solid land.

TOPOGRAPHY

The Arctic region contains a wide range of landscapes; plains, mountains, some very large significant rivers and lakes, rolling hills, huge stretches of tundra and the edge of the largest biome in the world, the taiga.

The Arctic

Terrain		-The Arctic Ocean is the main feature of the Arctic. However, it is covered by thick sea ice for most of the year, underneath a blanket of snow. Therefore, the Arctic is quite flat compared to the Antarctic.
Climate and Weather Patterns		-The Arctic is not as cold as the Antarctic: the ocean warms the air a little. It is still very cold though! -In some months, the northern lights can be seen in the Arctic.
Animals		-Polar bears are one of the apex predators in the Arctic. -The arctic fox, reindeer, walrus, beluga whales and narwhals also live in the Arctic circle.

The Antarctic

Terrain		-The Antarctic is based on a large land continent (Antarctica) covered in ice and snow. Antarctica has several mountains, as well as huge glaciers. Large icebergs can be found at sea.
Climate and Weather Patterns		-Antarctica is the coldest place on Earth. The temperature can reach as low as -89°C! -Worse still, freezing blizzards can take place for days at a time.
Animals		-Emperor penguins are one of Antarctica's most famous residents. A number of seals and birds also live in Antarctica.

Key Vocabulary

- Arctic
- Antarctic
- North Pole
- South Pole
- Arctic/
Antarctic Circle
- Robert Scott
- Roald Amundsen
- Explorer
- Degrees Celsius
- Glaciers
- Icebergs

Antarctica is 98% covered in ice which means that away from coastal regions (and even including many coastal regions) the landscape is icy mountains, glaciers or smooth ice-sheet. There are no significant rivers and none that flow year round, lakes are small, rare and often permanently frozen over, there is very little land vegetation, and no grassland, shrubs or trees. There are small areas of tundra on the Antarctic Peninsula and larger expanses on a number of Antarctic and sub Antarctic islands (though nothing like the huge areas found in the Arctic).