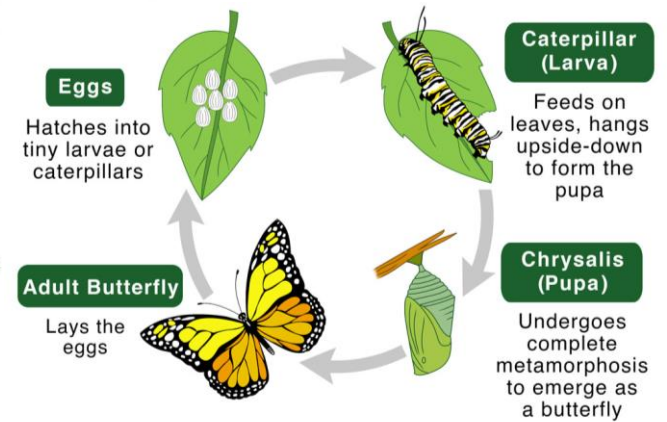
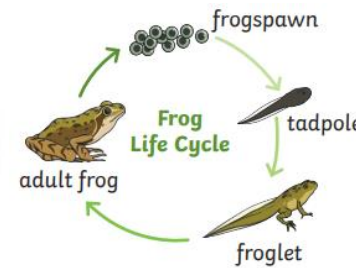
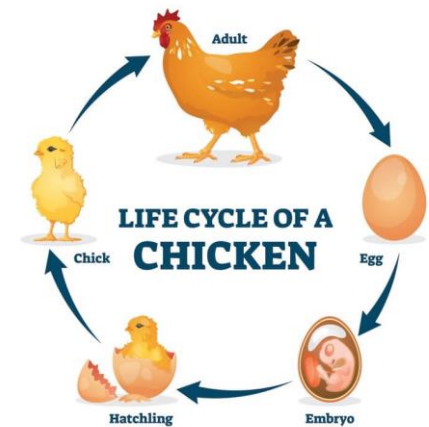
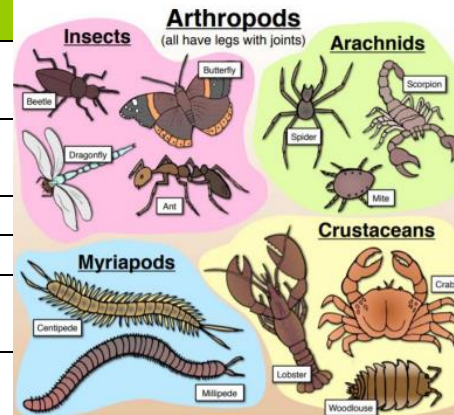


# Mini beasts and Life Cycles

## Key Vocabulary

insect	a small animal that has six legs and generally one or two pairs of wings.
mini beast	a small invertebrate animal like a spider or insect.
thorax	the chest of an animal
abdomen	the middle part of an animal
exoskeleton	a hard covering on the outside of an insect's body.
life cycle	The changes living things go through to become an adult.
Metamorphosis	The changes in form of some living things as they grow. The change from caterpillar to butterfly or from tadpole to frog are examples of metamorphoses.
Larva	An insect after it hatches from an egg and before it changes into its adult form.
Pupa	An insect in a middle stage of its development, after it is a larva.
chrysalis	The hard outside covering on a moth or butterfly while it is a pupa.



## Where do mini beasts live?

A mini beast's home is called a habitat.

A habitat is where an animal lives. It can be as big as a forest or as small as a leaf.

Can you think of a good habitat for a minibeast?